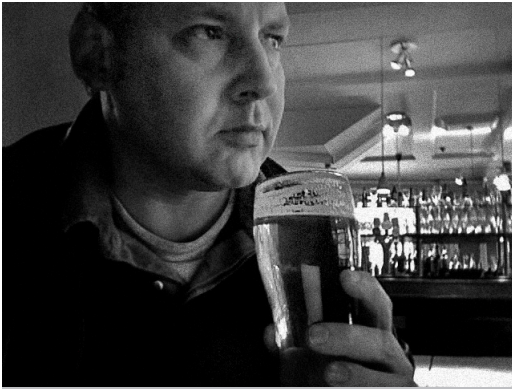


JOHN BEARDSWORTH'S



LIGHTROOM PRODUCTIVITY PLUG-INS



John Beardsworth is a London-based photographer, author of 7 books on digital photography, and consultant who has worked with leading pros, Adobe and Microsoft.

After escaping from life in a suit, working on financial and business systems, he brought a wealth of database and programming experience and a fiercely-practical approach to the problems of digital photography.

Before Lightroom, John used Extensis Portfolio, then transitioned to iView/Expression Media where he was the leading writer of scripts automating it on Windows. Now one of the leading authorities on Lightroom, he specialises in issues of workflow, metadata and digital asset management (DAM).

This document will eventually cover all his publicly-released Lightroom plug-ins.

<http://www.beardsworth.co.uk>

Contents:

Plug-ins - general comments

Installation	3
Search Replace Transfer	
Search and replace	5
Append	6
Transfer	7
iView / Ex Media	8
Parse + Audit	9
The custom fields	10
Warning	10
Custom field names	10

PLUG-INS - GENERAL COMMENTS

Installation

All John's plug-ins are designed to run identically on both Windows and Mac.

Unzip the plug-in and save the Irplugin folder onto your computer. While this can be anywhere, it is better to decide upon a consistent place and it's recommended that it should be in a plug-ins folder in Lightroom's Application Data/Application Support folder. For example:

Windows XP:

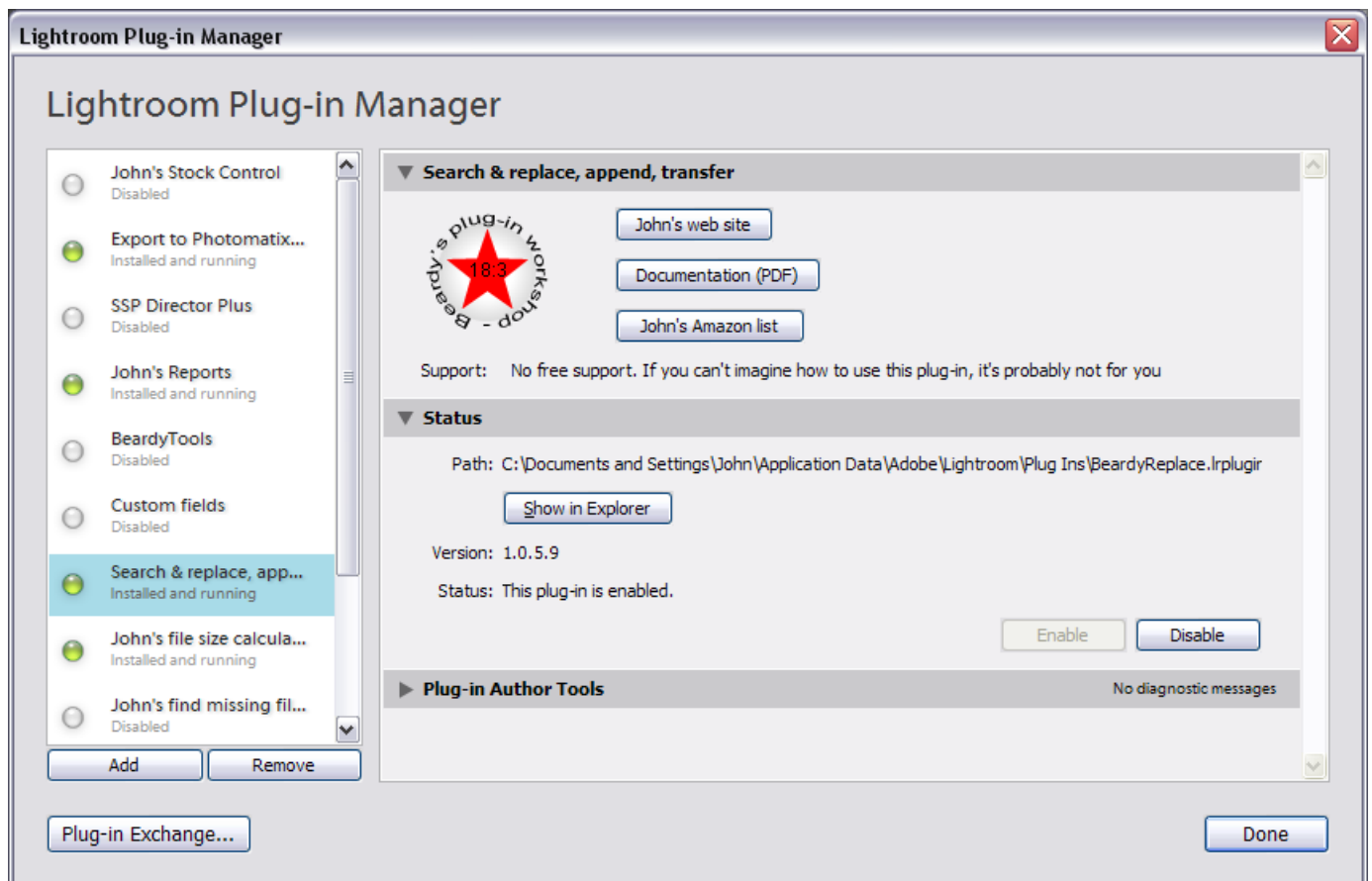
C:\Documents and Settings\John\Application Data\Adobe\Lightroom\Plug Ins

Mac OSX

User\Library\Application Support\Adobe\Lightroom\Plug Ins

You may have to create the Plug Ins folder.

Then install the plug-in through Lightroom's Plug-in Manager. In Library, File > Plug-in Manager:

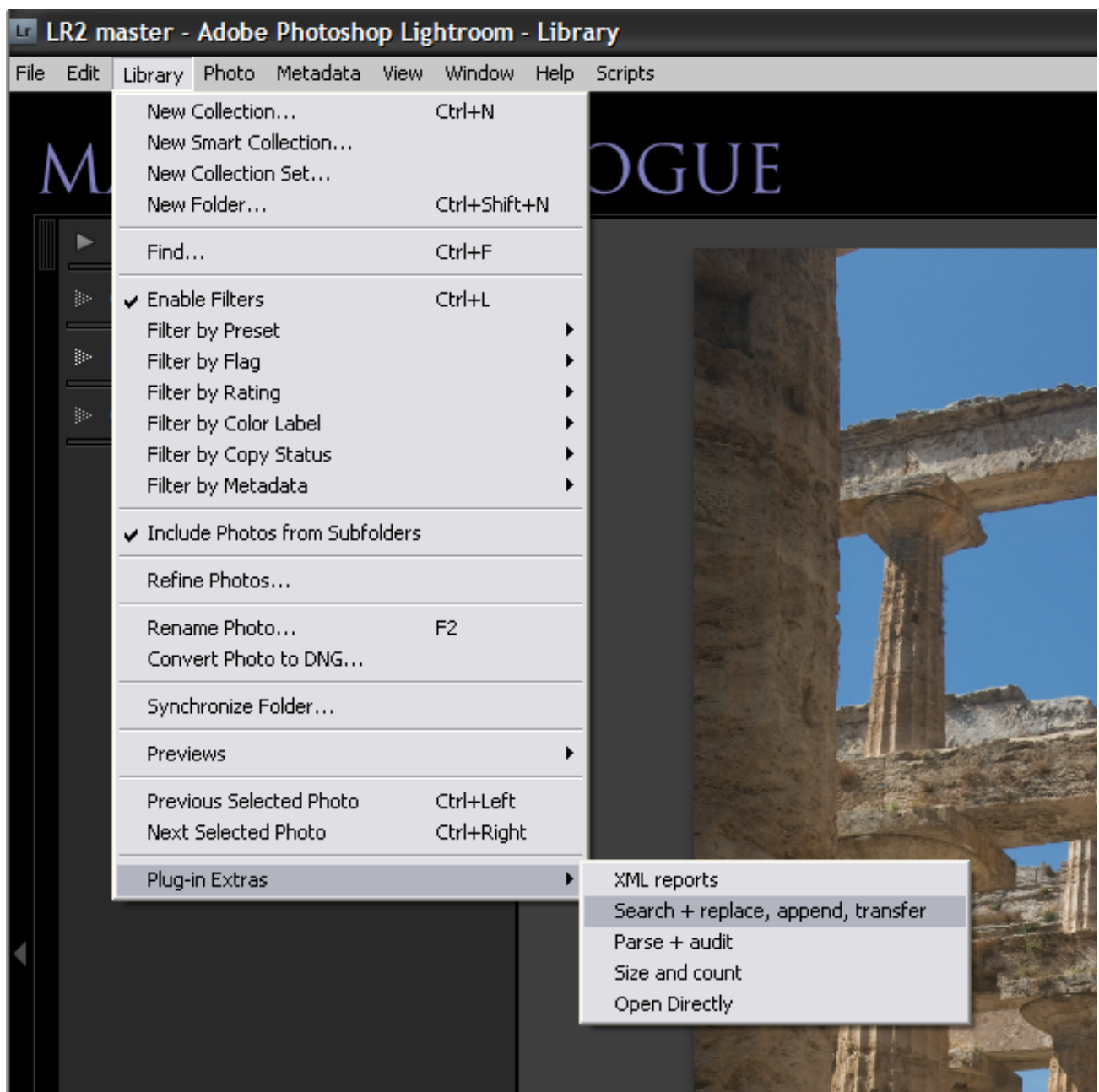


SEARCH REPLACE TRANSFER

Search Replace Transfer is a Lightroom 2 and 3 plug-in designed for changed to text in Metadata Panel fields:

1. Searches and replaces text like a word processor
2. Appends text before or after
3. Transfers values between fields
4. Transfers metadata from iView/Expression Media to 18 custom fields
5. Audits title, caption and keyword entry

To start the plug-in, in Library, use the menu command Library > Plug-in Extras > Search + replace, append, transfer



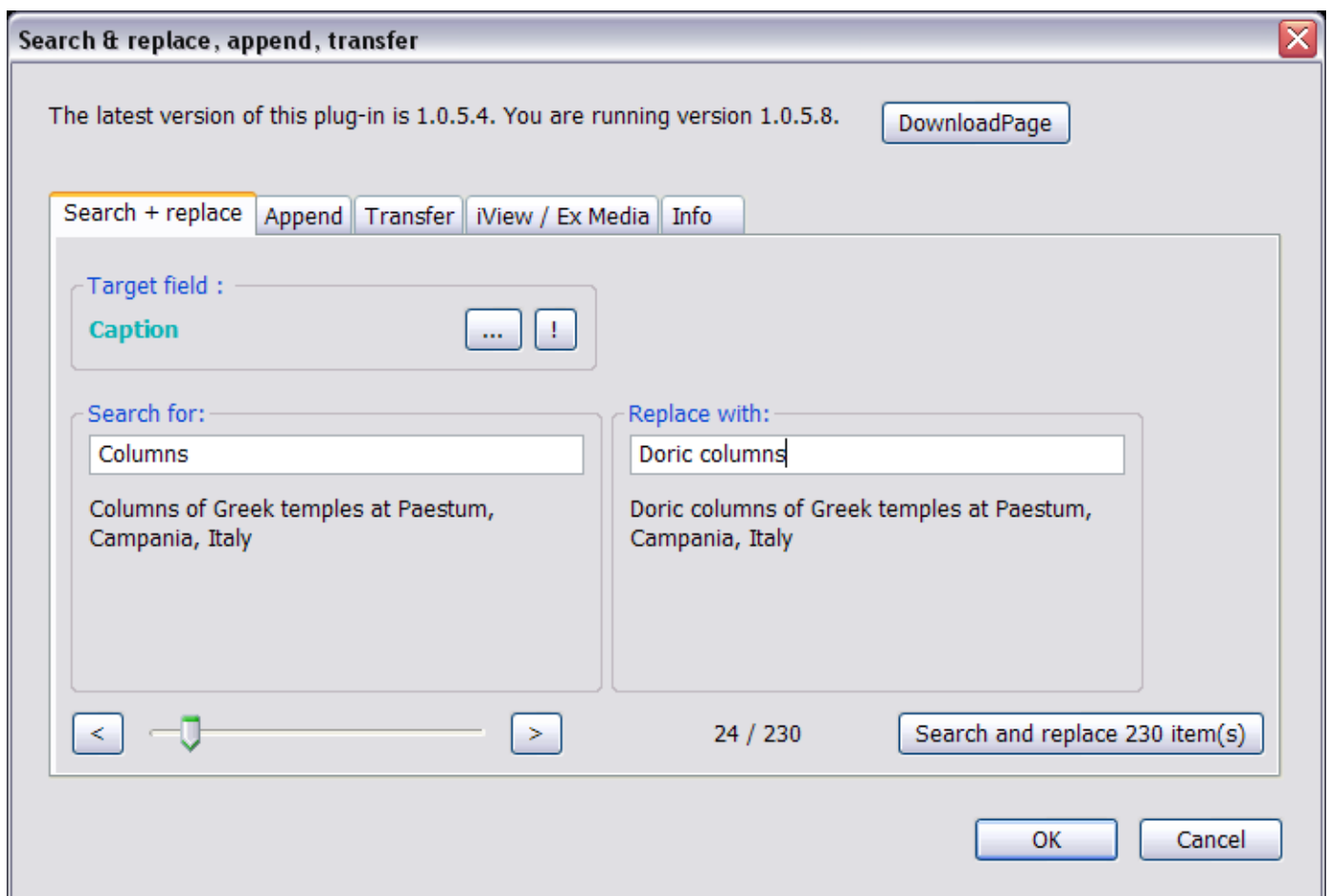
Search and replace

This option searches through the chosen field for a word or phrase, and replaces all its occurrences with alternative text.

So for instance, you may have some pictures with a variety of captions like "Close-up of columns at Paestum", "Frontal view of columns at the Capitol, Washington DC", "Columns at the Parthenon, Athens" and so on. Imagine some of them have the misspelling "columnn" – how do you correct that? Or how do you insert the word "Doric" before "Columns" in all these images?

This command lets you search for the word "columnn" and replace it with "columns", or search for "columns" and replace it with "Doric columns".

So in this case, I have 230 images and want to insert the word "Doric" before "Columns" in the caption field:



Change the field by clicking the "..."

Preview the results by moving the slider.

CASE MATTERS

This plug-in is case sensitive, so in the above example I'm searching for "Columns" and occurrences of "columns" will not be updated

WHICH IMAGES ARE AFFECTED?

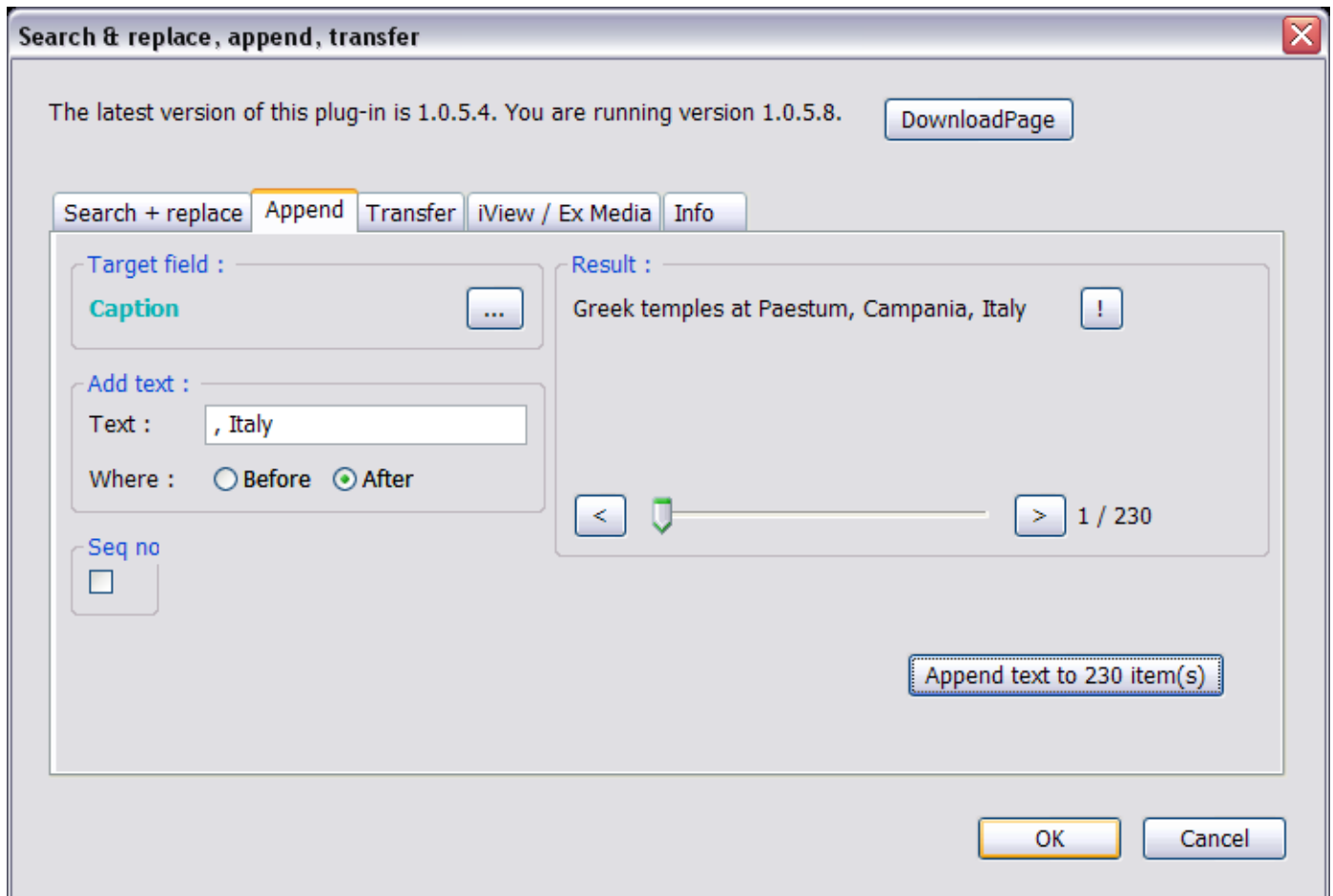
The plug-in works in the same way as Lightroom. If you have selected some images, then it will target them. If you have no images selected, it assumes all visible images should be updated.

Append

This option adds extra text to the chosen field, either before or after the text.

For example, imagine some of images' captions are "Greek temples at Paestum, Campania" and others have "Temple at Paestum", how do you add the text ", Italy" to all images? You could select the first group, then add it, and then do the same to the second group.

Or you can use this command to add the text to all the images simultaneously:



REVIEW YOUR BACKUP

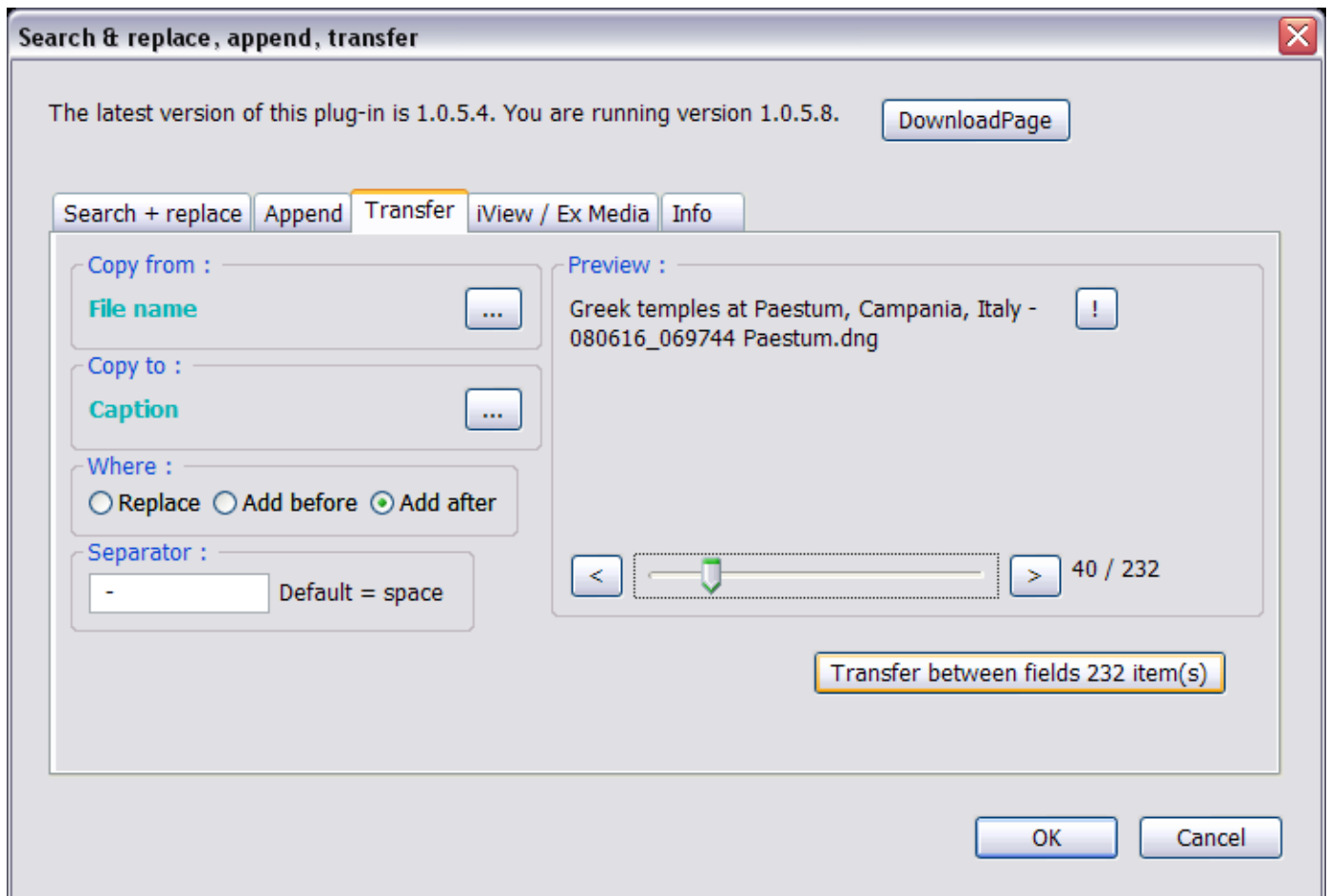
This plug-in makes it easy for you to change lots of images' metadata. As with all Lightroom work, make sure you frequently back up your catalogue.

Transfer

Transfer copies the contents of one field to another

You can choose to overwrite or replace the contents of the Copy To field, or you can add to whatever is already there.

For example, here I want to add the filename to the end of the caption field, and I want to place a hyphen between the existing caption and the filename.



WHICH IMAGES ARE AFFECTED?

The plug-in works in the same way as Lightroom. If you have selected some images, then it will target them. If you have no images selected, it assumes all visible images should be updated.

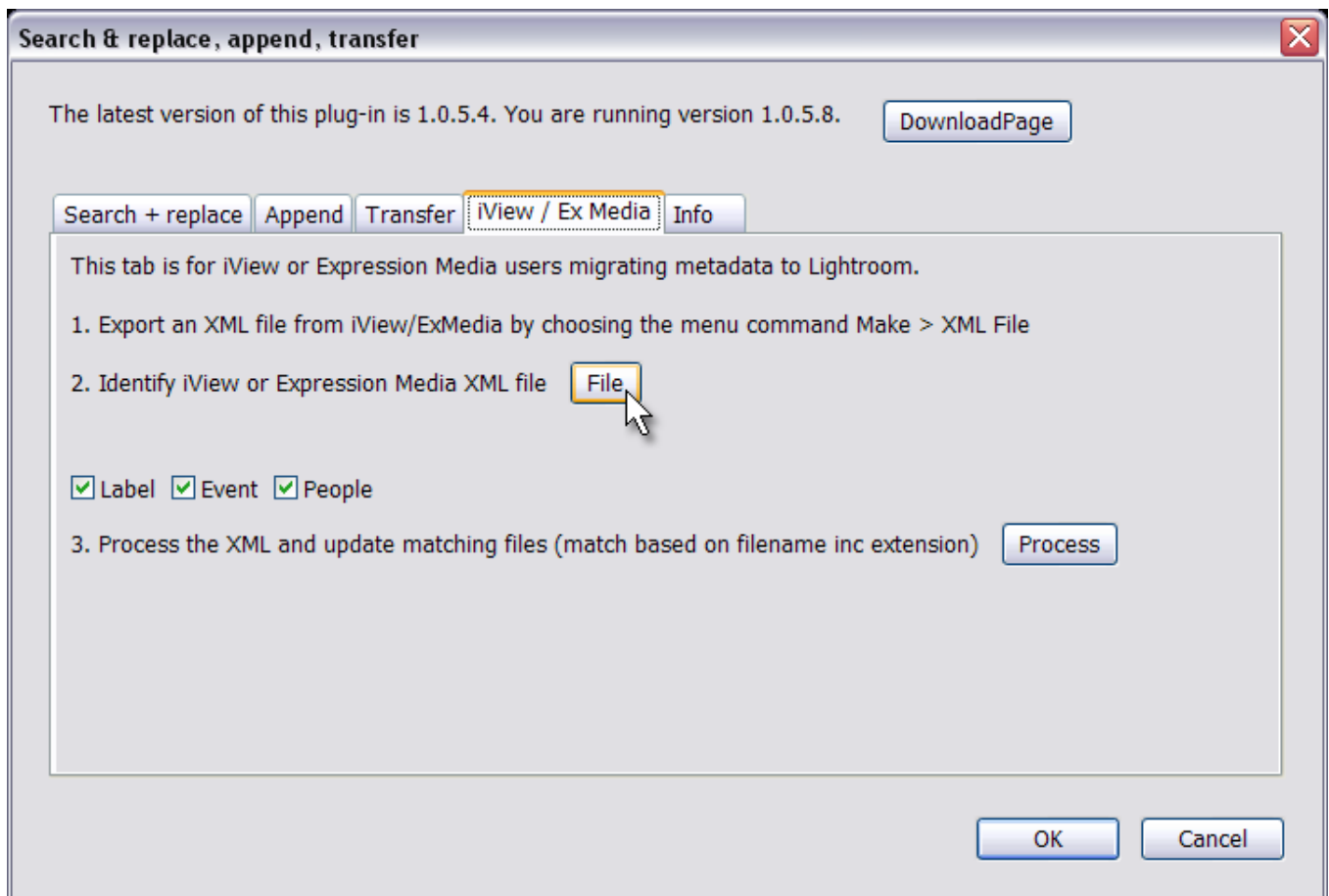
iView / Ex Media

Most iView / Expression Media metadata - keywords, title, caption, rating etc - can be transferred via Sync, which writes the data into the original. However, the 16 custom fields, event, and people don't have a matching place in Lightroom, while iView / Expression Media's coloured labels don't match Lightroom's.

To use the command:

1. Start in iView / Expression Media and run Make > XML Data File. This creates an XML export containing the metadata for all the thumbnails currently visible in iView / Expression Media. Save this file somewhere you can easily find it - eg the desktop.
2. In Lightroom, go to the Plug-In Manager and tick the check box to enable this tab
3. Click the File button and point to the XML export file.
3. Wait until it has been parsed (there's a text pop up)
4. Click the Process button.

It's important that the matching is done on the basis of the filename and the extension. If your filenaming convention allows for duplicate filenames....



REVIEW YOUR BACKUP

This plug-in makes it easy for you to change lots of images' metadata. As with all Lightroom work, make sure you frequently back up your catalogue.

Parse + Audit

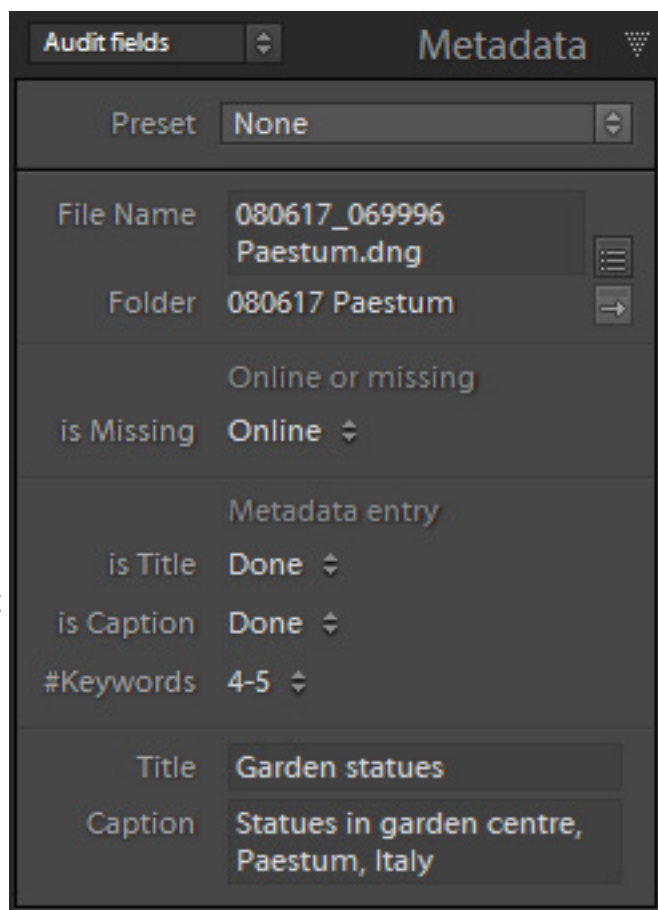
Parse + audit is to help review your metadata entry and make it more consistent and thorough.

It is a menu command under Library > Plug-in Extras and simply reviews your pictures and gathers certain information which it shows in the Audit fields view of the Metadata panel:

1 “is Missing” tests whether the image is online or not.

2. “is Title” and “is Caption” check whether there is any text in those fields - needed because Lightroom still doesn’t have a Smart Collection criterion that checks if the title or caption is empty.

3. #Keywords counts the number of keywords entered. While Lightroom’s Smart Collections have a “keywords is empty” criterion, items disappear as soon as you enter one keyword. So this calculates the number upon demand. You can then see if you’ve entered as many keywords as you need - and identify any exceptions.



All of these extra audit fields can be shown in the Filter Panel (below) or in Smart Collections. Here in the Library Filter Panel, #Keywords shows me that 1 image has only a single keyword assigned, while most others have 6-10 or 11-20. It probably needs more attention, and maybe it is the same picture where the title or caption is marked as Empty.

Library Filter:

Text

Attribute

Metadata

None

Parse + audit

#Keywords	is Title	is Caption	is Missing
All (3 Values) 231	All (2 Values) 231	All (2 Values) 231	All (1 Value) 231
1 1	Empty 1	Empty 1	Online 231
6-10 159	Done 230	Done 230	
11-20 71			

Note that these are not “live” values - they are recalculated each time you run the menu command.

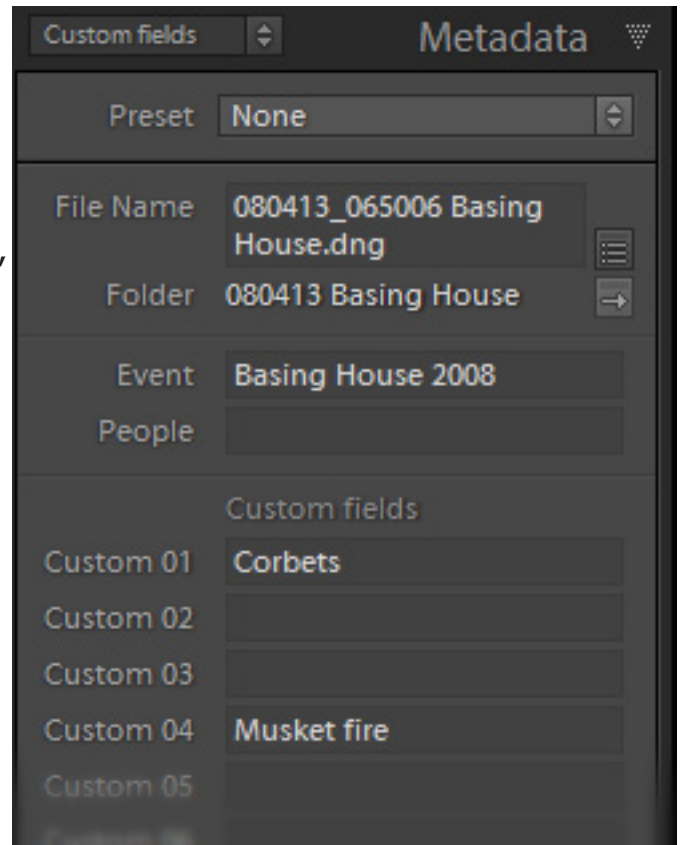
The custom fields

You don't need to have been an iView / Expression Media user to use the 16 blank fields plus fields for event and people.

Warning

Because of certain weaknesses in Lightroom's implementation of custom fields, I urge caution before eusing custom fields for valuable metadata.

Imagine in a year or two my plug-in didn't work because Lightroom 4 had changed something, and for some reason I wasn't around or or demanded an extortionate fee for upgrading. Your custom metadata would still be in the catalogue, but the fields would no longer be visible or available to you. You would either have to use your own coding skills or find someone else who could figure out how to access the data. Luckily more and more people are now getting to grips with Lua, the obscure and ugly coding language Adobe use for writing plug-ins, and I've deliberately not encrypted the metadata definition file.



The risks are not unique to my plug-ins, and while I don't discourage you from putting data in custom fields, it's important that you are aware of these issues.

Custom field names

If you don't like the custom fields to be called Custom 01 etc, there is a way to change the field names.

Just open PluginInitCustomFields.lua in a text editor such as Windows Notepad or TextWrangler. Here I have changed the name of Custom 01 to "My Custom Field Name". For the changes to take effect, you'll need to restart Lightroom, or reload the plug-in.

```
_G.custompanel = 'Custom fields'
_G.custom01 = 'My Custom Field Name'
_G.custom02 = 'Custom 02'
_G.custom03 = 'Custom 03'
_G.custom04 = 'Custom 04'
_G.custom05 = 'Custom 05'
_G.custom06 = 'Custom 06'
_G.custom07 = 'Custom 07'
_G.custom08 = 'Custom 08'
_G.custom09 = 'Custom 09'
_G.custom10 = 'Custom 10'
_G.custom11 = 'Custom 11'
_G.custom12 = 'Custom 12'
_G.custom13 = 'Custom 13'
_G.custom14 = 'Custom 14'
_G.custom15 = 'Custom 15'
_G.custom16 = 'Custom 16'
```