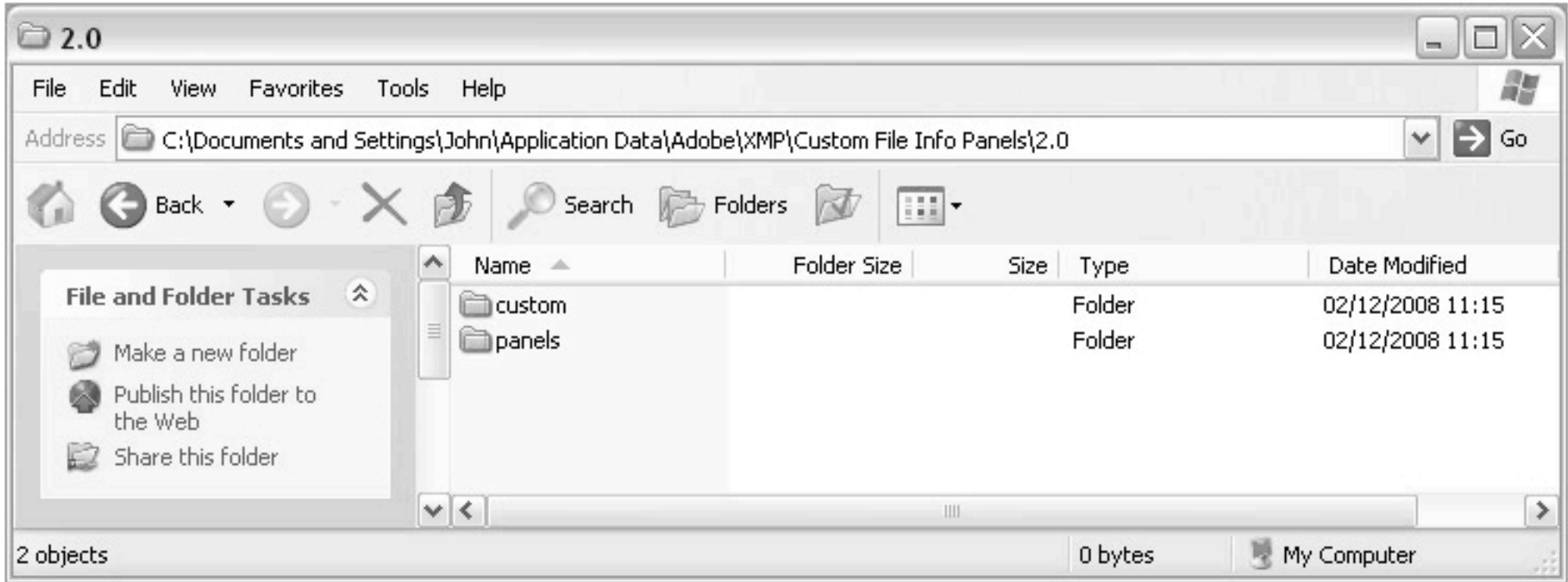


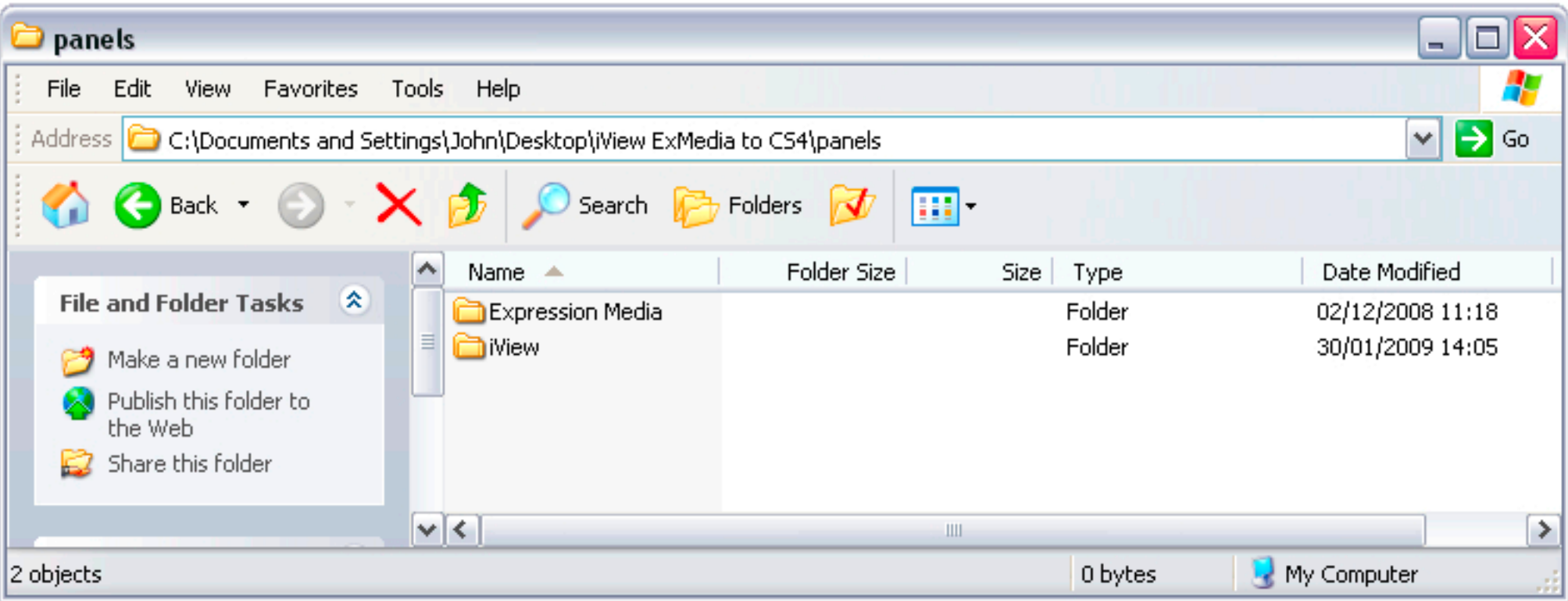
WHERE STUFF NEEDS TO GO

Folders "Custom" and "Panels"

WINDOWS XP: C:\Document and Settings\<username>\Application Data\Adobe\XMP\Custom File Info Panels\2.0\panels
WINDOWS VISTA: C:\Users\<username>\AppData\Roaming\Adobe\XMP\Custom File Info Panels\2.0\panels
MAC OS: MAC/Library/ApplicationData/Adobe/XMP/Custom File Info Panels/2.0/panels



Create panels folder if needed
For example: C:\Documents and Settings\John\Application Data\Adobe\XMP\Custom File Info Panels\2.0\panels\Expression Media\
IMPORTANT FOR MAC USERS - note that the location needs to be **the Mac's library** and **not the user library**



Integration script

On Pc: C:\Documents and Settings\John\Application Data\Adobe\Bridge CS4\Startup Scripts
On Mac: User/Library/ApplicationData/Adobe/Bridge CS4/Startup Scripts